

# LED Mirror Cabinet Instructions

Instructions for installation and use



# Technical Specification

All models: Supply Voltage AC 220 – 240V 50 / 60Hz  
Class 1, IP44 Suitable for Zone 2

| Model Number | Mirror Doors | Product Dims |        |       | Maximum Power Consumption<br>(Lights & Demister) |
|--------------|--------------|--------------|--------|-------|--|
|              |              | Width        | Height | Depth |  |
| 316520       | 2            | 500          | 640    | 135   | 39 kWh / 1000h                                   |
| 316539       | 2            | 600          | 640    | 135   | 40 kWh / 1000h                                   |
| 316547       | 2            | 700          | 640    | 135   | 42 kWh / 1000h                                   |
| 316849       | 2            | 900          | 640    | 135   | 52 kWh / 1000h                                   |
| 316857       | 3            | 1200         | 640    | 135   | 57 kWh / 1000h                                   |

## Contents of Box

1 x LED Mirror Cabinet

1 x Wall Hanging Bracket

3 x Screws and Plugs

2 x 20mm bottom fixing screws including cover caps and washers

## Warning

**Do Not** strike glass components with hard or pointed items.

**Do Not** place very hot or very cold items against or in close proximity to the glass surface unless an adequate thick insulation material is used to prevent such items coming in contact with glass.

**Never** cover the mirror as it is a heated product.

This mirror should be positioned away from curtains and other fabrics.

We recommend that the mirror is turned off after use and should never be left on for prolonged periods of time.

This mirror is 5mm thick film backed for safety, if it is broken or chipped replace immediately.

This product is only suitable for permanent installation, **DO NOT** connect to a trailing plug and socket outlet.

Always switch off the electrical supply at the mains during installation and or maintenance.

All fittings must be installed by a competent person, in accordance with current IEE wiring regulations, if in doubt consult a qualified electrician.

## Wiring

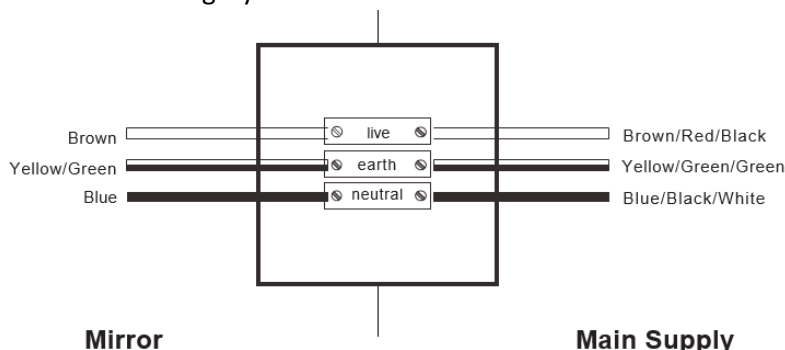
This product is manufactured to class I category and must have an earth connection .

### COLOUR CODING

L - Live

N - Natural

Earth - Green & Yellow



## Important Safety Information

There are 3-bathroom zones that have been identified by the 18th edition [IET wiring regulations](#) and all applicable British standards :

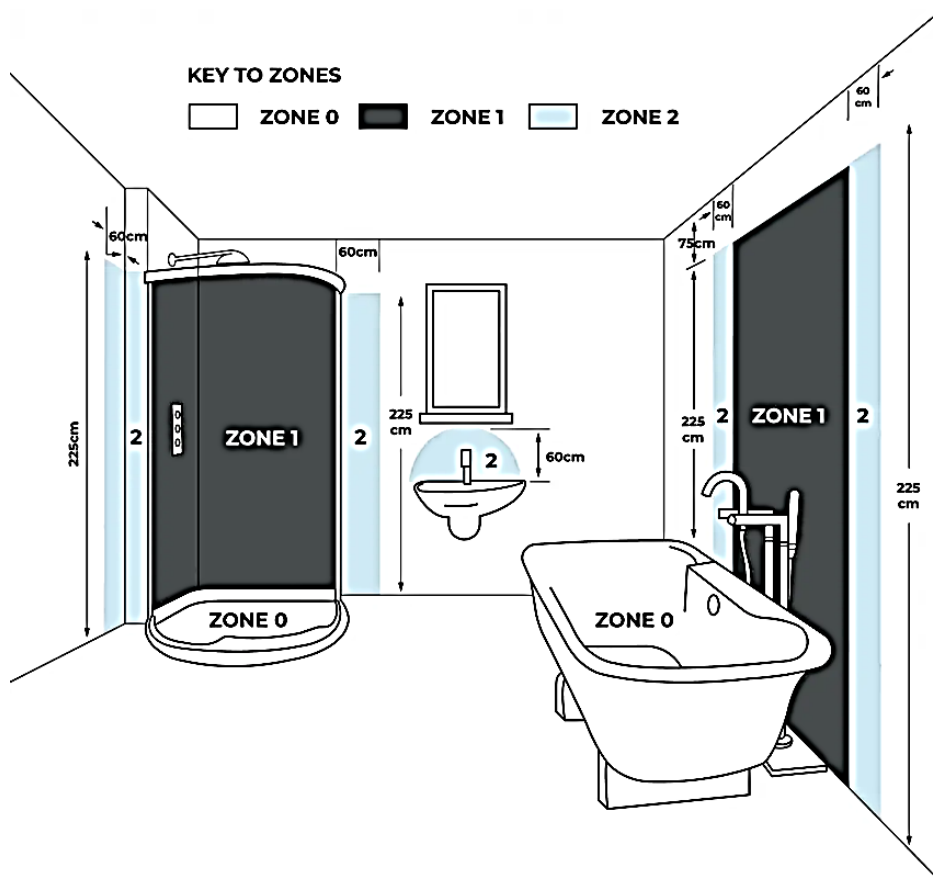
**Zone 0** is inside the bath or shower. Any fitting used in this zone must be low voltage, (max 12v) and be rated at least IP67 which is total immersion proof.

**Zone 1** requires a minimum rating of IP45 but it is generally accepted that IP65 is to be used.

**Zone 2** (60 cm radius) an IP rating of at least IP44 is required.

**Outside Zones** are anywhere outside zones 0, 1 and 2 there are no special IP requirements in this zone, however, we suggest to use a light with an IP rating of at least IP20.

**This information should be used for guidance only. Always refer to the current IEE Wiring Regulations or a qualified electrician to ensure that you are guided by the latest codes of practice.**



1. Before commencing installation or maintenance, isolate the main electrical supply for the appropriate circuit at the fuse board.
2. This product is only suitable for connecting to a 240V 50Hz supply.
3. The mirror should be mounted onto a secure surface.
4. When installing please take care to avoid water pipes, joints and electrical cables.

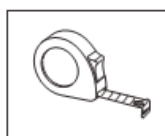
## Installation

To ensure the normal use of this product, it is required you set out wiring as per the regulations of IEE at the installation place. This product should be installed on a wall suitable to hold its weight. The installation must be carried out by a professional electrician, wrong installation may lead to product damage and / or personal injury.

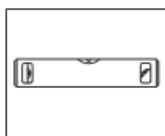
***This product must not be installed into Zones 0 or Zone 1 see page 4***

***Prior to commencing work isolate the power supply cable at the main fuse box.***

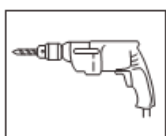
### Tools Required for the Installation



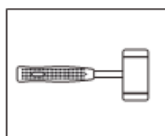
Measuring tape



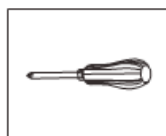
Spirit level



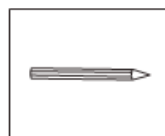
Drill



Hammer



Screwdriver



Pencil



Drill bit

### Fixing the bar

Open the product packaging, and check the product has no signs damage prior to installing. If the product is damaged please return it.

After selecting the location of the mirror cabinet, check whether the wall is solid, check that there are no other concealed cables or pipe work in the intended installation area (check the entire area).

Make sure that it is at the correct height and level. Measure the distance of the holes in the aluminum alloy bar with a tape measure and mark the wall with a level and pencil (Fig. 1).

Using the correct size drill bit for the wall fixing, drill holes in the marked locations. Please note that for certain wall types i.e. plasterboard walls, the wall fixings supplied are not recommended

Knock the expansion plugs into the holes in the wall with a hammer, and then tighten the screws with a screwdriver to fix the bar, and check the level with a spirit level (Fig. 2).

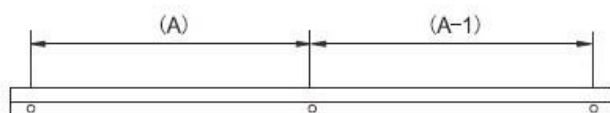


Fig. 1

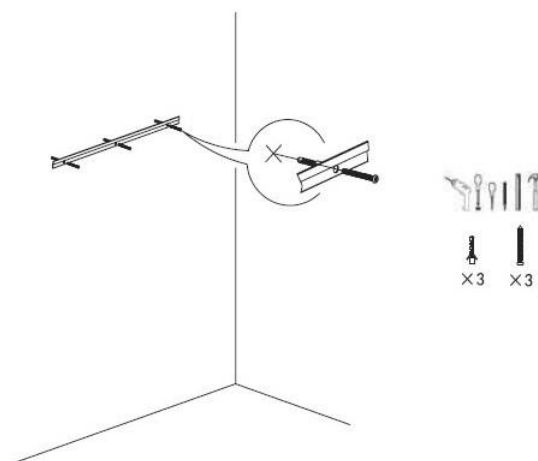


Fig. 2

# Installation

## Positioning and Installation of Mirror Cabinet

Attach the mirror cabinet to the bar as shown in Fig. 3, open the cabinet doors, and mark the two fixing points on the wall (b2) with a pencil through the backplate holes (b1). Remove the mirror cabinet, drill the fixing holes in the wall in the marked positions, and place the expansion plugs (Fig. 4).

Connect the supply cable to the connector block as shown in the wiring diagram. Ensure the conductors are fully inserted into the terminals and no loose wire strands are protruding. Fully tighten the screws on the terminals making sure that the screw clamps onto the conductor and not the insulation.

Finally, mount the mirror cabinet to the bar, put the screw through the cover cap and then tighten the screws on the backplate (Fig. 5). Check the mirror for level, and then turn on the main switch and test the mirror.

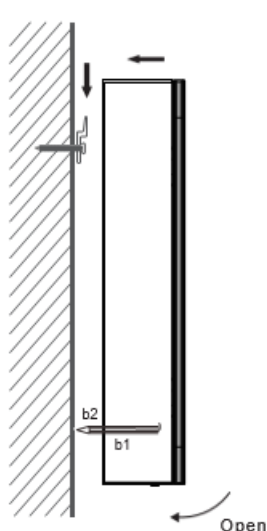


Fig. 3

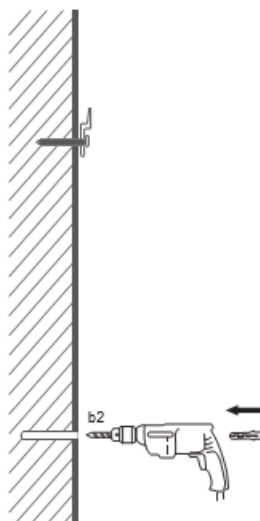


Fig. 4

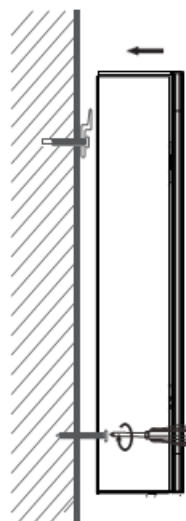
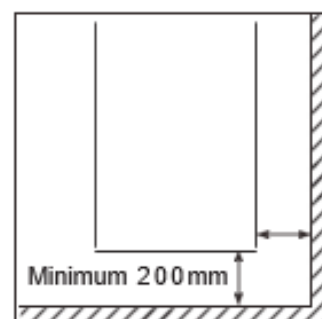


Fig. 5



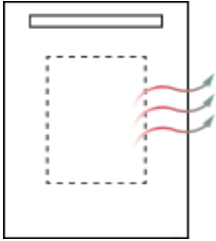
**Please Note:** Products with an IR sensor must be installed with a minimum of 200mm between the IR sensor and any solid or reflective surface.



## Recycling and disposal

Please recycle the packaging in accordance with your local government regulations on waste handling, and follow the same advice at the end of the products life.

## Operation



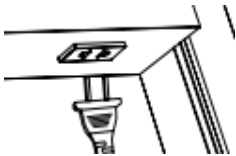
### Heated Demister Pad

Demister pads heat the surface of the mirror above room temperature removing the mist on the surface of the mirror. If your mirror comes with a demister then it will turn on/off using the main power button or IR sensor. It takes 3-4 minutes for it to completely heat up and demist.



### IR Sensor

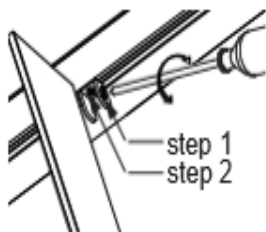
The lights and demister can be powered On / Off by moving your hand below the infrared sensor. This is placed on bottom or side of cabinet. To select a colour from either Warm White to Cool White, move you hand under the sensor to switch the cabinet lights on, once the light is on keep your hand under the sensor to change the colour. Once the colour has been chosen you can dim the brightness of the light. This can be done by putting your hand back under the sensor and holding it there until the desired brightness level is achieved. The selected colour and brightness level are memorised as default the next time the lights are activated.



### Shaver Socket / USB Port / Wireless Charger

You can plug your electric toothbrush / shaver into the socket on the cabinet.

Using the wireless charger you can also charge your phone.



### Glass Shelving

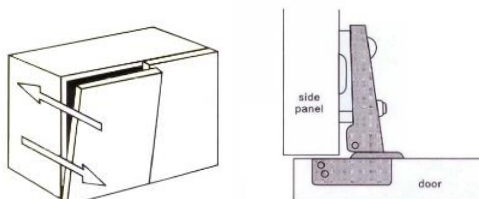
The height of the glass laminate can be adjusted up and down.

Step1: Unscrew and take out the glass shelves

Step2: Loosen the screw of the glass shelf mounter and adjust the height (Do Not unscrew the screw fully as the nut will fall off)

**Safety Warning:** Do not disassemble the door unless necessary.

# Adjustment

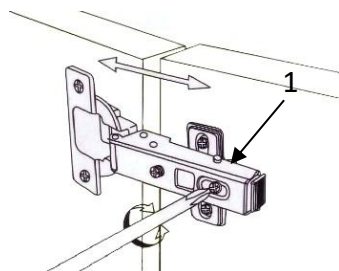


## Door Front adjustment

Set the distance between the back face of the door and the edge of the unit side panel.

**Tip:** Leave an approx. 2mm gap to help avoid binding.

To fix the hinge arm to the hinge plate, tighten screws **(1)** securely.

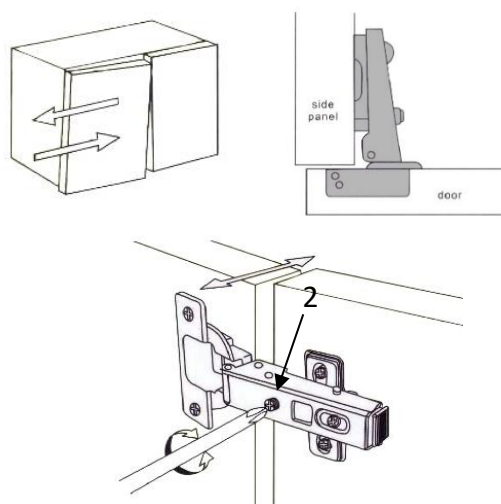


## Door Lateral overlay adjustment

Adjust screws **(2)** to adjust the edge of the door so it is runs parallel with the outside face of the unit side panel.

**Note:** The edge of the door should be set back approx. 1.5mm from the edge of the unit.

**Note:** For the protection of the damper, it only allows a lateral adjustment. (left to right)

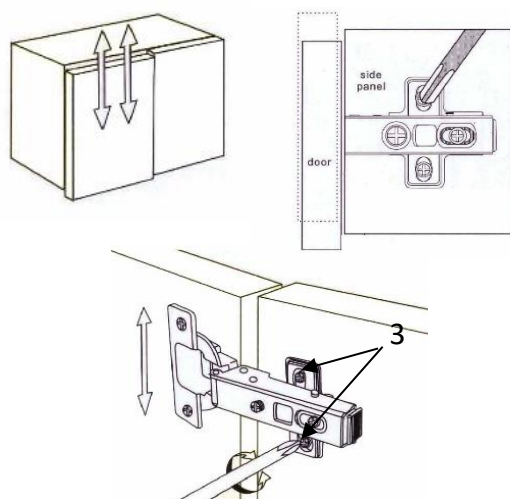


## Door Vertical adjustment

The door can be vertically adjusted by turning the plate screws up and down. (3)

The door can be vertically adjusted by loosening the screws **(3)** on all of the hinge plates on the door and carefully moving the door up or down as required.

Once in position re-tighten all the screws **(3)** to secure in place.





## Maintenance and Care

- Ensure that the power is disconnected prior to cleaning.
- To keep the finish of this product, wipe over with soft cloth periodically.
- Do not use harsh chemical solvents, this may dis-colour or damage the finish.
- Use a soft, dry non abrasive cloth to clean the mirror, only do this when mirror is turned off.
- Do not use harsh chemical solvents, this may dis-colour or damage the finish.
- Do not allow moisture to come into contact with the electrical components.

## General Information

### Environment



Meaning of crossed –out wheeled dustbin:

Electrical appliances should not be disposed as unsorted municipal waste. Separate collection facilities should be used in the disposal of electrical appliances. Contact your local government for the information about the available collection systems. If electrical appliances are disposed of in landfills or dumps, hazardous substances can leak into the groundwater and get into the food chain, damaging your health and well-being. When old appliances are replaced by the new ones, it is a legal obligation for the retailer to take back the old appliance for disposals at least free of charge.



This mirror cabinet complies with the Safety Standards EN IEC 60598-1:2021+A11:2022, EN IEC 60598-2-1:2021, EN IEC 61558\_1:2019 and EN IEC 61558-2-5:2023. The EMC standards EN IEC 301489-1 V2.2.0, EN IEC 301489-17 V3.2.0, EN IEC 55015:2019+A11:2020, EN IEC 61547:2023, EN IEC 55014-1:2021, EN IEC 55014-2:2021, EN IEC 61000-3-2019+A1:2021, EN IEC 61000-3-3:2013+A2:2021 which covers the essential requirements of the European Electro Magnetic Compatibility 2014/30/EU. The EMF standards EN IEC 62493:2015, EN IEC 62479:2010 and EN IEC 50663:2017.



This mirror cabinet complies with the Safety Standards BS EN 60598-1:2021+A11:2022, BS EN 60598-2-1:2021, BS EN 61558-1:2019 and BS EN 61558-2-5:2023. The EMC standards BS EN 301489-1 V2.2.0, BS EN 301489-17 V3.2.0, BS EN 55015:2019+A11:2020, BS EN 61547:2023, BS EN 55014-1:2021, BS EN 55014-2:2021, BS EN 61000-3-2019+A1:2021, BS EN 61000-3-3:2013+A2:2021 which covers the essential requirements of the Electro Magnetic Compatibility Regulations 2016. The EMF standards BS EN 62493:2015, BS EN 62479:2010 and BS EN 50663:2017.



RoHS stands for Restriction of Hazardous Substances, and impacts the entire electronics industry and many electrical products as well. The Restrictions of the Use of Certain Hazardous Substances in Electrical and Electronic Equipment Regulations 2012, originated in the European Union in 2002 and restricts the use of six hazardous materials found in electrical and electronic products. All applicable products in the EU and UK market since July 1, 2006 must pass RoHS compliance.

**Be Modern Ltd.** 19-34 Bedesway, Bede Industrial Estate, Jarrow, Tyne and Wear, NE32 3BE.

Tel: (0191) 428 0444

Fax: (0191) 480 5002

<http://www.bemodern.com>

