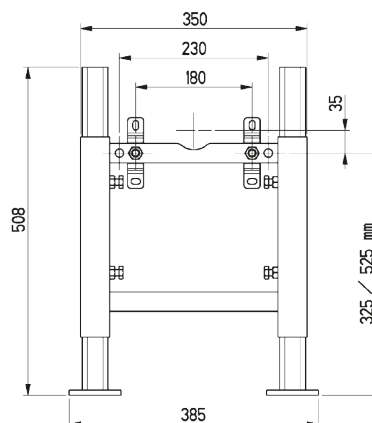




Diagrams not to scale.  
All dimensions in mm tolerance of +/- 2mm



#### Specification:

- For installing a wall mounted WC
- Self supporting wall frame bearing a 400kg load
- Designed for floor or wall installation
- Electro-welded and anticorrosion treated steel tube structure
- Feet made from epoxy painted steel plate
- Cistern supply

Unit Weight:

8.4kg